

SPECIMEN COLLECTION INSTRUCTIONS

Endocervical Brushing

The Cytobrush® (“bottle” brush) is a useful biopsy instrument, especially as an adjunct to curettage sampling of the endocervix. For the occasional Pap test with atypical glandular cells of undetermined significance (AGUS), a follow up endocervical brushing with the Cytobrush® can provide important diagnostic information about the atypical glandular cells.

This type of collection should be placed into cytology fixative instead of formalin. This allows us to produce both cytologic and histologic preparations, thereby providing valuable additional information about the collected glandular cells. The endocervical brush sampling is different than the endocervical curettage “ECC”^{*} and should be labeled as “ECB in cytology fixative.”

^{*}See separate specimen collection instructions for endocervical curettage.

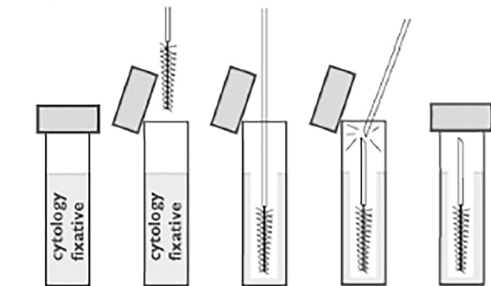
Supplies

- Cytobrush (“bottle” brush)
- 10 cc of cytology fixative in vial (provided upon request)

Specimen Collection:

1. If both curettage and brushing are planned, perform the curettage first.
2. Insert the Cytobrush well into the endocervical canal and twist two full rotations.
3. Remove Cytobrush and place instrument directly into cytology fixative. Do not make glass smears of the brush.

Figure 1: Using the tube with cytology fixative for brushings alone (no curettages)



Immerse brush in cytology fixative, clip brush handle to fit in tube and replace cap tightly.

4. Snip or break the plastic handle of the Cytobrush so that the brush will fit completely in the tube of fixative. (See FIGURE 1)

5. Seal fixative container tightly. Label outside of container with patient’s full first and last name, second unique identifier, and “ECB.”

6. Submit with a properly completed cytology requisition as “ECB in cytology fixative.”